

MICHELIN
SCOTLAND
INNOVATION
PARC



CREATING A GREENER FUTURE WITH

INNOVATION

FOR PEOPLE, PLACE & PLANET

CONTENTS

05	MICHELIN SCOTLAND INNOVATION PARC
06	ABOUT MICHELIN SCOTLAND INNOVATION PARC
10	THE SPACE
12	THE INNOVATION HUB
14	COLLABORATION OPPORTUNITIES
16	THE SKILLS ENVIRONMENT
18	BUSINESSES OPPORTUNITIES AT MSIP
20	RESEARCH AND DEVELOPMENT AT MSIP
21	HYDROGEN PRODUCTION FACILITY AND REFUELLING STATION AT MSIP
22	GREEN ENERGY
24	FUNDING AND BUSINESS SUPPORT
25	KEY PLAYERS AT MSIP
26	OTHER ACTIVITY

MICHELIN SCOTLAND INNOVATION PARC

Michelin Scotland Innovation Parc (MSIP) is a world leading innovation parc focused on sustainable mobility and low carbon energy.

A modern, flexible and exciting space dedicated to innovation and manufacturing, the Innovation Parc will be home to a rich variety of activity, alongside companies, academia and skilled people to address key global challenges.

At MSIP there is a range of opportunities including flexible space, a clean energy supply and access to business support, skills and networks.

Located in Dundee in the North East of Scotland, MSIP offers a physical environment with options that can meet any purpose.

This vast space provides opportunities for businesses to grow and additional amenities for those based there.

You'll find that at MSIP local and national government, industry and academia are uniquely connected and change can be driven quickly.

THIS EXCITING NEW INNOVATION PARC WILL CREATE A GREENER FUTURE, THROUGH INNOVATION FOR PEOPLE, PLACE & PLANET.



PEOPLE

MSIP connects industry trailblazers with the great minds of academia, to come together to face climate change head on. At MSIP there is a vibrant community with an abundance of expertise, where opportunities to generate new ideas are made.

PLACE

MSIP provides a dynamic space, home to an ever-evolving mix of companies, researchers and students from small technology start-ups and hot-desking to large industrial businesses. It is a totally flexible place where you will be supported to thrive.

PLANET

Capitalising on current policy, MSIP is at the forefront of the climate change movement and a centre for excellence in the transformation of the transport sector. Everything at MSIP is underpinned with a collaborative approach, to achieve the goal of net zero.

ABOUT MICHELIN SCOTLAND INNOVATION PARC

Michelin Scotland Innovation Parc is an ambitious joint venture between Scottish Enterprise, Dundee City Council and Michelin, created to drive growth and diversity in the Scottish economy while addressing the global climate emergency.

Created in response to the closure of Michelin's Dundee site, MSIP Ltd. is transforming what was a 32-hectare manufacturing site into an Innovation Parc focused on sustainable mobility and low carbon energy, that will put Scotland at the forefront of the climate change movement.

BY BUILDING THE MICHELIN SCOTLAND INNOVATION PARC, MSIP LTD. WILL DEVELOP AN INNOVATION PARC THAT MEETS THE FUTURE NEEDS OF SCOTLAND AND THE WORLD.

MSIP Ltd. is committed to working together in partnership with the public sector, industry, academia and the local community to transform Dundee into a key location for innovation that will progress emerging technology for a greener future.



DID YOU KNOW?

Scotland's islands are home to some of the world's most innovative projects integrating renewable energy generation and transport systems including a number of hydrogen demonstration projects on Orkney.



VISIT US ONLINE AT
WWW.MSIPDUNDEE.COM

PARTNERS

With three strong partners that have a global reputation for thinking differently, and a unique public-private sector partnership, Michelin Scotland Innovation Parc is the place to be for advances in the sustainable mobility and low carbon energy sectors.

Michelin is a world leading innovative corporation, operating competitively in a changing world.

Dundee City Council is recognised as a trailblazer in the move away from high carbon using vehicles, putting in place a competitive physical infrastructure across Dundee, leading the way in the UK.

Scottish Enterprise has a proven track record for helping companies grow and driving commercially competitive ideas to fruition.

The key partners of MSIP Ltd. have the resources, expertise, drive and determination to rise to the challenge of the climate change emergency and succeed with this exciting Innovation Parc.



LEGACY

With a site that has been built and maintained to Michelin standard and access to a previous Michelin workforce that has a world-wide reputation for quality and skill, MSIP will be built on a legacy of excellence.

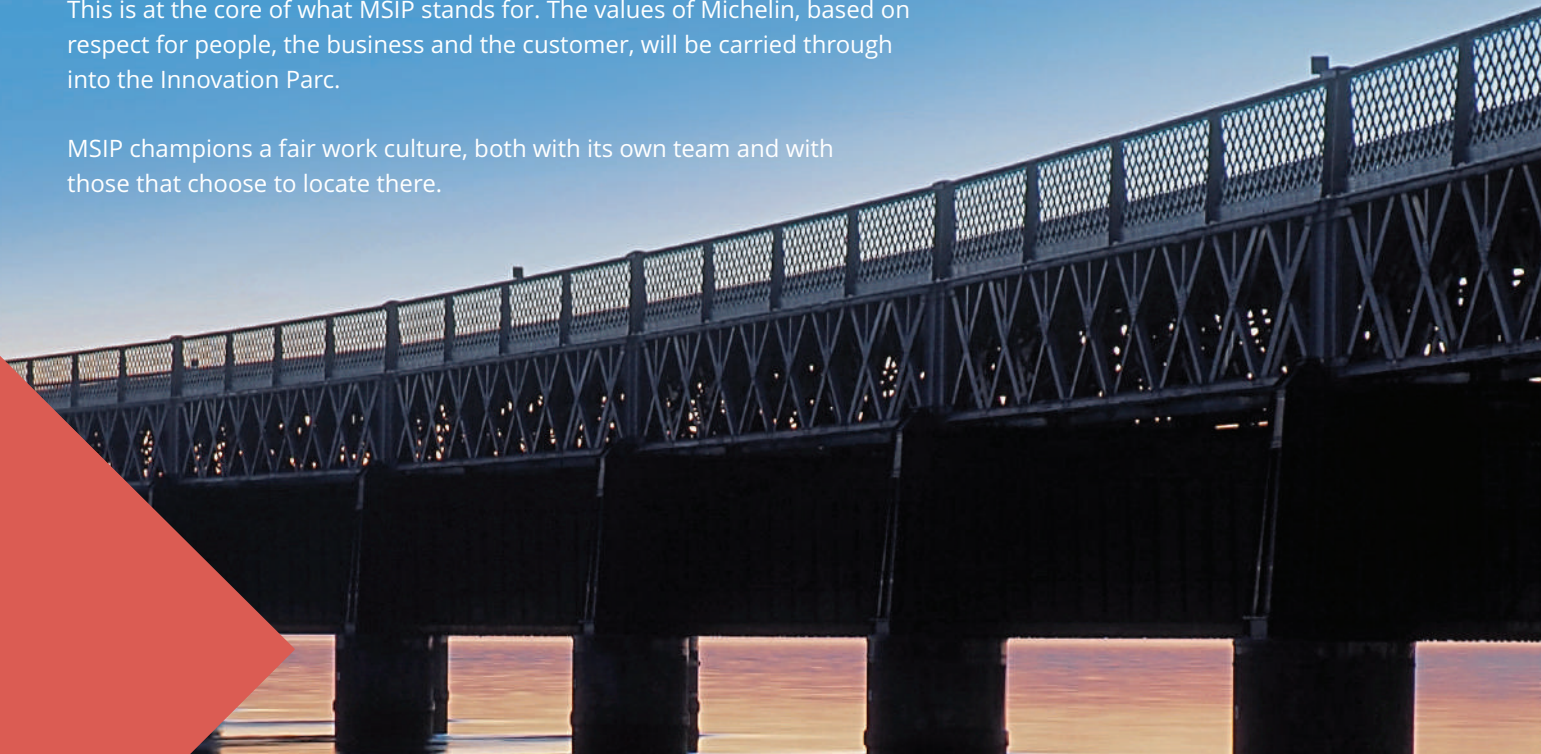
Michelin's Dundee site was future thinking, on track to be carbon free in the next few years. That expertise, ambition and physical infrastructure carries on with MSIP.

CULTURE

If you locate at MSIP, you will be a part of not just an excellent physical environment but also a culture of fairness that will underpin all that MSIP does.

This is at the core of what MSIP stands for. The values of Michelin, based on respect for people, the business and the customer, will be carried through into the Innovation Parc.

MSIP champions a fair work culture, both with its own team and with those that choose to locate there.



LOCATION

MSIP is located in the North East of Scotland, at the centre of the East Coast supply chain route.

With easy routes to Aberdeen and the greater North of Scotland, a short car or train ride to Edinburgh and Glasgow, good air and rail links to London and close proximity to Scotland's countryside, it is connected to where you need to go.

Dundee's excellent location is complimented with a friendly local community and an exceptional quality of life with low cost of living, which make MSIP an attractive option for you and your employees. Within the wider location of Dundee, much regeneration has occurred over the last decade.

The Waterfront has opened up Dundee's City Centre as a vibrant location with bars, restaurants and social spaces. V&A Dundee is attracting a world-wide audience to visit Dundee as well as connect the local community to a shared ambition of Dundee being a great place to work and live.





Do you have growth ambitions but want to do this at your own pace, with limited disruption to your business?

We know moving can be tricky. That's why at MSIP you can have one postcode for the lifespan of your business, with no need to move.

With flexible space that can be adapted to any purpose, MSIP will support you through your growth journey.

Covering a vast land area of 32 hectares, MSIP has a range of buildings that have been designed for manufacturing, with the highest specification.

There is office accommodation, some of which has recently been refurbished and others that offer a blank canvas to be adapted to meet your needs.

THE SPACE

As well as space for manufacturing businesses to locate, MSIP offers a mixture of activity including:

- Innovation Hub
- Skills Academy
- Hydrogen Production Facility and Refuelling Centre
- Green Energy
- Events Space
- Community Space

There is a large car park for those located at MSIP and 24-hour security. Additional facilities including a gym, running track, coffee shop and creche are all in development. MSIP can help your business flex and grow to make the most of opportunities as they arise. If this sounds like a place your business will thrive, speak to us now.



FOLLOW OUR JOURNEY
@MSIPDUNDEE



DID YOU KNOW?

Every one of Scotland's city centres will be vehicle emission-free by 2030 thanks to a £80m investment in walking and cycling and a £500m investment in bus infrastructure.

THE INNOVATION HUB

The Innovation Hub at MSIP offers dedicated space for those located there to come together and develop ideas for the future. The Innovation Hub, currently under development, has been specifically designed for collaborative use by industry and academia focused on sustainable mobility and low carbon energy. Located at the centre of the Innovation Parc and sitting at the heart of the Innovation Campus, it will create a cluster of activity.

The Innovation Hub is a dynamic space that will house a changing mixture of small and growing companies, pre and post start-ups, project teams from larger companies, and researchers and students, all aspiring to achieve the same goal of zero carbon.

THE DESIGN OF THE SPACE AND THE SELECTION OF TENANTS AND PARTICIPANTS WILL FOSTER COLLABORATIONS, AND DRIVE INNOVATION.

The physical space of the Innovation Hub will house activities associated with incubating and growing companies and moving technologies towards market.

By focusing on sustainable mobility and low carbon energy, the Innovation Hub will leverage synergies between companies working in similar areas.



Are you looking for a place where innovation is nurtured, your ideas can thrive, and collaboration opportunities are plentiful?

THE INNOVATION HUB WILL INCLUDE:

Incubation and hot desking: Shared hot desking areas, creating activity and buzz.

Core Facilities: Shared reception, catering and meeting rooms (including a space suitable for presentations) and excellent broadband.

Shared Facilities: Access to shared facilities geared to the requirements of the tenant such as equipped workshops with the capability to develop prototype/one off parts, a workshop with core engineering facilities, shared warehousing/logistics space and labs. More specialist shared facilities can also be considered. There will also be access to a gym and creche.

Accelerator Programme: Targeted at early stage companies and pre-start propositions, with a competitive element to help refine the proposition, offering a cohort of successful applicants an intensive period of support based in an incubator environment.

Support Services: Business advice and support, directly and indirectly by signposting to existing services, mentoring, legal and accountancy, etc.

Access to Capital and Access to Markets: The opportunity to pitch to potential venture investors and/or potential customers or channels to market.

Links into Universities: The association with academic institution(s) offering access to expertise, to IP and to smart graduates.

The Innovation Hub at MSIP will be available by Autumn/Winter 2021. The Accelerator will be launched Autumn 2020.



CONTACT US AT
INFO@MSIPDUNDEE.COM

COLLABORATION OPPORTUNITIES

MSIP understands how important it is for industry and academia to work together, to create ideas for the future. At MSIP you'll be connected to a culture of research, innovation and creativity, with support from world leading institutions.

MSIP can support your business to access collaboration opportunities that will test out new ideas, research and develop emerging technologies, and grow your business.

WITH CONNECTIONS TO SCOTLAND'S NETWORK OF UNIVERSITIES AND COLLEGES, MSIP CAN ENSURE THOSE LOCATED AT THE INNOVATION PARC HAVE ACCESS TO RELEVANT EXPERTISE.

Are you interested in battery and hydrogen technology? MSIP's strategic partnership with the University of St Andrews and the nearby Eden Campus Energy Centre will tap into their expertise, enabling you to progress your innovations in this area competitively at the Innovation Parc.

A strategic partnership between MSIP and Dundee University has already identified opportunities in a range of relevant areas, and this will grow and adapt to the expertise of the tenants located at MSIP.

Beyond academia, MSIP is fully engaged with a network of innovation centres that have been designed by industry for industry-led collaborations.

These centres blend academic creativity and invention with industrial insights, offering specialist knowledge to help companies address specific market opportunities.

MSIP will also work closely with the National Manufacturing Institute for Scotland (NMIS), focused on future manufacturing skills.

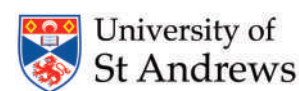


DID YOU KNOW?

The world's first passenger-carrying autonomous bus will be the CAV Forth Project over the Forth Road Bridge.



We are working with industry and academia to develop strong, meaningful partnerships. This includes:



The University of St Andrews has embraced sustainability, fully integrating it into all that it does, with a mission to be recognised locally and internationally as a world-class institution that leads by example in this area. Its Eden Campus Energy Centre, a world-leading hub for energy innovation and storage, is central to the strategic drive to achieve this and become the UK's first energy carbon neutral university. It also has a proven track record in battery technology and hydrogen, that is enabling the industry in Scotland to progress both areas competitively.



MSIP's collaboration with the University of Dundee will provide the opportunity for those located at the Innovation Parc to work with the University, to develop new and advancing products for the future of sustainable mobility and low carbon energy. The University of Dundee will make connections between its people, research and innovations and MSIP's tenant companies and MSIP will offer flexible space for the University's startups, spin outs and research and development. MSIP will work with the University to identify and apply for relevant funding opportunities, and encourage collaboration with MSIP's Skills Academy and Accelerator Programme. This partnership brings in the University's expertise across a range of relevant areas, as well as its extensive experience in design and development and design for manufacture.



The National Manufacturing Institute Scotland is a group of industry-led manufacturing research and development facilities where industry, academia and the public sector work together on ground-breaking research to transform productivity levels, make companies more competitive and boost the skills of our current and future workforce ultimately helping to make Scotland a global leader in advanced manufacturing. The National Manufacturing Institute Scotland will see the development of a new world-class facility in Renfrewshire which will work collaboratively with the existing specialist technology centres: Lightweight Manufacturing Centre and University of Strathclyde's Advanced Forming Research Centre; the only High Value Manufacturing Catapult centre in Scotland. MSIP will work closely with NMIS focusing on future manufacturing skills and how this can link in with activity at the Innovation Parc.



THE SKILLS ENVIRONMENT

Do you want to attract and retain the right talent to maintain your competitive edge?

MSIP understands how important it is to have access to the right skills and talent, and the challenges that come with the changing needs of your business, for now and the future.

By locating at the Innovation Parc, MSIP can support your business to access a highly trained workforce with the right skills and experience.

MSIP HAS ACCESS TO THE PREVIOUS MICHELIN WORKFORCE, INTERNATIONALLY RECOGNISED AS ONE OF THE BEST TRAINED AND MOST RELIABLE IN THE WORLD.

When it comes to talent, Scotland's Universities and Colleges are developing people that can meet the skill set required for the future in sustainable mobility and low carbon energy.

The academic offering is evolving, in response to the demands of the world that we now live in. Scotland's academic skills offer is also strongly represented in sectors such as advanced engineering and manufacturing.

These industries can offer skill sets well suited to diversification into low carbon-based opportunities.

Dundee has a rich heritage in manufacturing and design, that has established a skilled workforce over decades. Dundee also offers a cost-competitive labour force.

MSIP will connect with academia and industry leaders, to ensure it has the most competitive skills offering for those based at the Innovation Parc.



VISIT US ONLINE AT
WWW.MSIPDUNDEE.COM



THE SKILLS ACADEMY

Are you seeking a readily available workforce? Do your future plans include an evolving workforce with new skills that are currently difficult to obtain?

MSIP understands that being able to employ a workforce with the right set of skills is critical to business success. That's why the Skills Academy is for businesses locating at the Innovation Parc. MSIP's high-quality Skills Academy will have the capability to train, develop and transform individuals into the workforce of the future.

Run by Dundee and Angus College, connecting to the wider work of Skills Development Scotland (SDS) and the National Manufacturing Institute for Scotland (NMIS) Skills Academy, MSIP's Skills Academy will focus on the skills needed within sustainable mobility and low carbon energy.

The Skills Academy will deliver bespoke training packages tailored to the specific needs of those located at the Innovation Parc. It will offer courses for prospective and current employees of tenants and offer an opportunity for co-located tenants to shape the future curriculum.

It will also cover broader demands of the future workplace and organisations, ensuring that the sustainable mobility and low carbon sector is resourced with the right people at the right time. Designed to bridge the gap between school and higher education, the Skills Academy at MSIP will provide practical space that allows hands on experience for its course participants.

With a flexible curriculum to equip individuals with core technical skills, it will build strengths in data, digital, creativity and innovation.

This will be delivered in collaboration with industry and academia, demonstrating MSIP's strong connection between schools, colleges, Universities and Industry leaders.

While the focus of the Skills Academy will be low carbon energy and sustainable mobility, programs will be developed to meet the broader needs of the region, assisting employers and individuals to transition towards advanced manufacturing and carbon efficient processes.

The curriculum and delivery style of the Skills Academy will build a strong legacy for Dundee and the Michelin workforce - who have a long-term reputation in design and innovation - through the inspiration and development of the next generation of engineers, operators and technicians.



DID YOU KNOW?

Dundee was named Europe's most visionary EV city in 2018 by the World Electric Vehicle Association and has the largest UK electric taxi fleet.

BUSINESSES OPPORTUNITIES AT MSIP

MSIP sits within an entrepreneurial environment of pioneering energy supply chain companies and world class innovation.

By locating at MSIP you will be able to connect with strong partners and world-leading academics and become part of a dynamic business environment. MSIP sits at the centre of the East Coast supply chain route, with easy links to Aberdeen and the greater North of Scotland, as well as towards Edinburgh and the South. Locating at MSIP will enable you to tap into these supply chain opportunities.

By choosing MSIP for your business, you will be part of a connected infrastructure, where expertise from across industry, academia and the public sector combines to transform current practices and research in the decarbonisation of transport.

By 2032 Scotland will phase out the need to buy petrol and diesel cars and vans and there are plans to decarbonise Scotland's railways by 2035. This presents a big opportunity for businesses located at MSIP within Scotland, setting an example for industry on a global scale.

Locating at MSIP will give you access to a forward-thinking, environmentally conscious customer-base that is already demanding battery powered transport and supports the concept of hydrogen fuel cells, bio fuels and other emerging technologies.

A modern, flexible and exciting space focussed on innovation and manufacturing, MSIP can accommodate a range of opportunities given its significant scale, access to clean energy and the support offered at the Innovation Parc.

MSIP has vast space for businesses to grow and amenities for those based there. Tenants have access to green energy delivered from sustainable sources and space that can be adapted for any purpose, as well as access to a skilled workforce. MSIP is looking for companies that want to find innovative solutions to the challenges the world now has. If you base your business at MSIP, you will find a supportive environment that wants you to succeed and will enable you to thrive.

NOW IS THE TIME TO INVEST AND BE PART OF THE MSIP JOURNEY TOWARDS A SUSTAINABLE FUTURE. NO IDEA IS TOO BIG OR TOO SMALL AT MSIP.



MSIP WANTS TO CREATE A GLOBALLY ATTRACTIVE LOCATION FOR BUSINESSES TO GROW. TO DO THIS, MSIP WILL:

- work with ambitious international partners to grow MSIP into a world class Innovation Parc;
- work with Scottish companies that have a proven track record in sustainable mobility and low carbon energy;
- identify start-ups and companies with the potential to grow, helping them to commercialise products and services in this field;
- progress innovation for the industry, creating good jobs in the process.

If you want to be part of the solution to the climate change emergency, you may be interested in the following immediate opportunities at MSIP.

Batteries & energy storage: As demand for battery cells in the automotive industry outstrips supply, Scotland is looking to scale up the production of batteries, whether that be lithium-ion batteries, sodium-ion, nickel zinc batteries or others, plus smart tech for battery packs and battery systems, to support the development of the market for vehicles fuelled by alternative energy sources.

There is a specific opportunity to develop this supply chain at MSIP in Scotland, to reduce the UK's reliance on overseas markets. Supplementary opportunities exist for battery recycling and reuse of batteries for second and third life use.

Heavy duty vehicles: Scotland is fast becoming a leading centre for the development of electric drive trains for heavy duty vehicles. It has established a series of platforms for R&D on different vehicle types including buses, trains, ferries, refuse and emergency vehicles. And there are exciting opportunities for companies to get involved in vehicle design, safety standards, niche vehicle manufacturing, commercial opportunities & skills transfer and technical support.

MSIP is located within a populated urban area, and in close proximity to remote rural locations, making it an ideal test bed for new electric vehicle development and deployment.

Hydrogen: With strong knowledge and capabilities in hydrogen, yet a currently limited supply chain within Scotland, MSIP offers plentiful opportunity for international companies active in this field. There are opportunities for fuel cell development, niche vehicle design and manufacturing, and additional

supply chain opportunities including refuelling infrastructure, operation and maintenance, plus hydrogen safety and flow rate meteorology.

At MSIP you can take advantage of the opportunity to work with Aberdeen Hydrogen Hub to develop a commercial supply of green hydrogen into the north east region or with Hydrogen Accelerator Initiative at the University of St Andrews to develop niche vehicles and optimise drive trains for specific applications.

Rail: Scotland's rail opportunity is based on planned and committed investment in rail - electrification, rolling stock and the wider rail infrastructure. It is working to grow supply chain capability for the rail sector and ensure supply of component parts and systems from Scotland for large rolling stock contracts such as HS2.

As Scotland moves towards delivery of zero emission railways by 2035, the focus is on light weighting and noise / vibration reduction and alternative methods of propulsion.

There are opportunities for companies experienced in these areas to locate at MSIP to innovate and grow. There is also an emerging opportunity for companies with expertise in the development of hydrogen technologies, for application in rail.



**FOLLOW OUR JOURNEY
@MSIPDUNDEE**

RESEARCH AND DEVELOPMENT AT MSIP



Are you looking to research and develop new products and services in sustainable mobility and low carbon energy? This is a big part of what happens at MSIP, where innovation is everything.

As the world transitions to a zero-carbon emissions economy, the focus is on creating innovations that will deliver against sustainable objectives and make a real difference in the areas that matter.

MSIP provides an environment for innovation and R&D in sustainable mobility, both large and small. It has excellent infrastructure, connectivity and space to grow as well as green energy and heat supplied from local sustainable sources.

The Innovation Parc offers dedicated testing facilities, that can be tailored just for you. Or alternatively, it offers shared spaces that can be used when required. These are flexible and can be adapted depending on your needs.

By researching your products and services at MSIP, you will tap into the opportunity to transform the transport sector, to lead the way and compete on the international stage.

There is huge potential to collaborate at the Innovation Parc, with Scottish universities, businesses and industry leaders, to play a central role in the development of new transport innovations. By coming to MSIP, your ideas will thrive, your products will develop and the world's journey towards net-zero will be progressed.



DID YOU KNOW?

The world's first hydrogen-fuelled seagoing car and passenger ferry is scheduled for launch in Orkney in 2021.



HYDROGEN PRODUCTION FACILITY AND REFUELLING STATION AT MSIP

Having world leading, future thinking projects at the Innovation Parc is key. That is why, on the north west corner of the Innovation Parc, MSIP will work in partnership with Dundee City Council to build a Hydrogen Production Facility and Refuelling Station.

This exciting project will utilise the renewable energy generation assets available at the Innovation Parc, to produce and store hydrogen.

This critical piece of core infrastructure and facility demonstrates MSIP's strengths and ambitions in being a world leader in sustainable mobility and low carbon energy, with hydrogen production and storage being key to a low carbon future.



**CONTACT US AT
INFO@MSIPDUNDEE.COM**



GREEN ENERGY

Fitting with the ambition to be a world leading location for sustainable mobility and low carbon energy, MSIP matches that ambition with the green energy that is on offer.

MSIP has the provision to offer low carbon energy, delivered from sustainable sources, at the Innovation Parc. With wind, steam and solar energy, there are different options for different needs. Optimisation of renewable energy is continually being explored by MSIP.

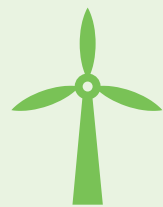
The benefits of this to those that chose to locate there are clear. As well as being cost effective, most of the capital-intensive energy infrastructure required to have this already exists or is currently being put in place by MSIP. Meaning you can access green energy, at no additional cost to your business.

This green energy offer is an attractive asset that can be utilised best by those that have significant electricity or heat requirements.



DID YOU KNOW?

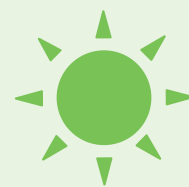
The world's largest fleet of hydrogen buses is located in Aberdeen and has already delivered over 1 million passenger miles.



WIND TURBINES:

Low carbon electricity is available from two sustainable sources, on-site wind generation through two wind turbines and via a private wire connection with MEB, a neighbouring Energy from Waste plant located on the west border of the Innovation Parc.

Each of these sources has the potential to deliver a significant reduction in the unit cost of electricity, compared to direct purchase from the Grid.



SOLAR POWER:

As well as offering extensive space, several of MSIP's workshops offer the opportunity to place solar panels on the roof to generate power. By placing lenses on the large roof areas of these workshops, you can convert sunlight energy into electricity, indirectly using the concentrated solar power and create an electric current. Solar power generation at MSIP offers another energy source that is much more cost effective than alternative sources and fits well within the low carbon green energy options we have.



STEAM AND ELECTRICAL POWER:

The nearby MEB plant is configured to provide sustainable heat to MSIP through a steam pipeline, with a backup heat source provided to cover during outage periods of the MEB plant. Further options for this can also be explored based upon specific requirements.



REDUCING THE CARBON FOOTPRINT:

MSIP is active in reducing the carbon impact of industrial processes and premises and improving energy productivity. The green energy supply fits with what it wants to achieve, a low carbon future that has sustainable solutions to the environmental problems of today.



VISIT US ONLINE AT
WWW.MSIPDUNDEE.COM

FUNDING AND BUSINESS SUPPORT

By locating at the Innovation Parc, MSIP will support you throughout your journey.

MSIP offers a business support programme that links the public sector and industry, identifying opportunities to help your business re-locate and grow. We are Scotland's flagship location for those supporting the transition to a low carbon economy.

MSIP will play a significant role in the decarbonisation of the transport sector and companies located there can be supported to do so.



Funding and Support: MSIP will work with you, to maximise the funds that can be accessed, such as the Michelin Development Fund and Scottish National Investment Bank (SNIB) and identify opportunities of funding from the sources that are available. During the transition phase, MSIP will utilise the services of Elevator who operate the local Business Gateway Service and Scottish Enterprise who deliver a series of business support products, programmes and services. Your business can be supported to locate at the Innovation Parc. For those based out with Scotland, relocating can be a daunting task. But thanks to MSIP's connections with Scottish Development International and its partners, it can make the move to Scotland an easy transition by assisting you with financial support, academic connections, talent attraction and professional advice. And the support doesn't end when you make the move. MSIP is committed to your growth, by taking the time to understand your needs now and in the future. It has the tools to take your business to the next level, whether it's identifying investment, R&D, collaboration or otherwise.

Access to Advisors: Having access to the right people at the right time is important to the success of your business. That is why MSIP will work with its partners to develop arrangements so that advisors are present at the Innovation Parc, for you to speak to directly when required. This will initially include advisors from its partner organisations Scottish Enterprise, Business Gateway, Dundee City Council and Universities, and this will progress in time.

Policy Environment: Scotland was the first country in the world to declare the Climate Change Emergency and pass world-leading climate change legislation, which sets a target date for net-zero emissions of all greenhouse gases by 2045. This commitment and global leadership is matched with the targets, policies and investments that Scotland makes, to take radical steps towards the decarbonisation of the transport industry, creating opportunities for ambitious companies to locate at MSIP. MSIP will capitalise on Scotland's policy and expertise, and current evolution of the industry, and turn this into opportunities for those that locate there.

KEY PLAYERS AT MSIP

MSIP will realise opportunities to work with key partners and players in the industry, such as:

Michelin: One of the three founding equity partners in MSIP Ltd.

Dundee City Council: One of the three founding equity partners in MSIP Ltd.

Scottish Enterprise (SE): One of the three founding equity partners in MSIP Ltd.

Scottish Government (SG): A strong policy provider and enabler, MSIP will work closely with Scottish Government.

Transport Scotland: Scotland's transport agency, providing input on Scotland's policies and action plan for sustainable mobility developments. Transport Scotland has access to the views of public, private and academic organisations on sustainable mobility and will identify key connections with best practice around the world.

Skills Development Scotland: Leading on the Skills Academy at MSIP. They are also closely linked into the National Manufacturing Institute for Scotland (NMIS).

UK Government: A strong policy provider and enabler, MSIP will work closely with UK Government.

Zero Waste Scotland: A strong supporter of MSIP. Utilising their knowledge of Scotland's capabilities and circular economy policies, Zero Waste Scotland will continue to advise and identify opportunities for MSIP.

University of Dundee: A strategic partner of MSIP.

University of St Andrews: A strategic partner of MSIP.

National Manufacturing Institute for Scotland: Led by the University of Strathclyde, MSIP is working closely with NMIS and connecting with this national project to ensure alignment.

Colleges: Dundee and Angus College will be a partner of MSIP. It also strive to work closely with other colleges within the region to maximise potential.

Private Sector Tenants: Tenants will occupy the facilities at the Parc, carrying out innovative and/or manufacturing projects.



CONTACT US AT
INFO@MSIPDUNDEE.COM

OTHER ACTIVITY

MSIP UNDERSTANDS HOW IMPORTANT OTHER ASPECTS OF THE PHYSICAL ENVIRONMENT ARE, FOR THOSE BASED AT THE INNOVATION PARC.

MSIP wants creativity to flourish and people to feel supported and valued. And beyond the working environment, MSIP has a lot to offer.

It has a large car park that has two electric car charging points and can accommodate up to 300 vehicles. The infrastructure also allows for access of HGV's.

The Innovation Parc is fully secure, with 24-hour security personnel and CCTV. This also means that your employees and visitors can access your space 24-hours a day with no limitations.

Vibrant open social spaces are in development, to relax and have some down time in.

A coffee shop will be located within the new Innovation Hub building. MSIP will also offer a creche facility, running track and gym, for those located there to utilise.



**FOR MORE INFORMATION VISIT
WWW.MSIPDUNDEE.COM**



MICHELIN
SCOTLAND
INNOVATION
PARC

Michelin Scotland Innovation Parc
Baldovie Road | Dundee | DD4 8UQ
info@msipdundee.com
www.msipdundee.com

